

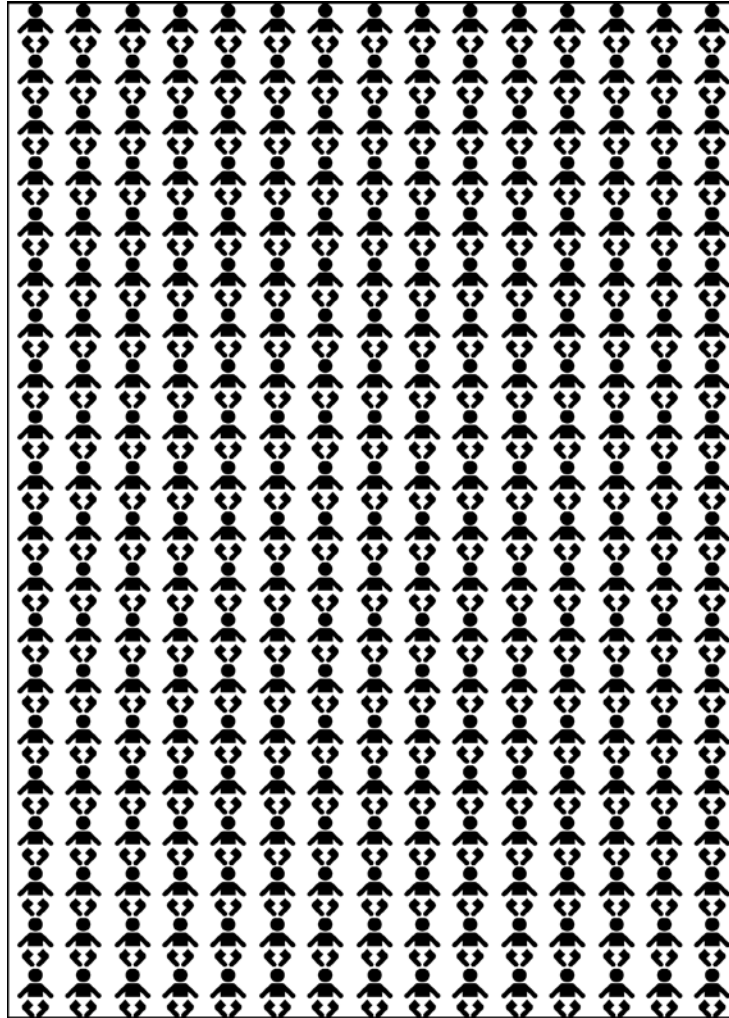


1/300 will have a serious infection

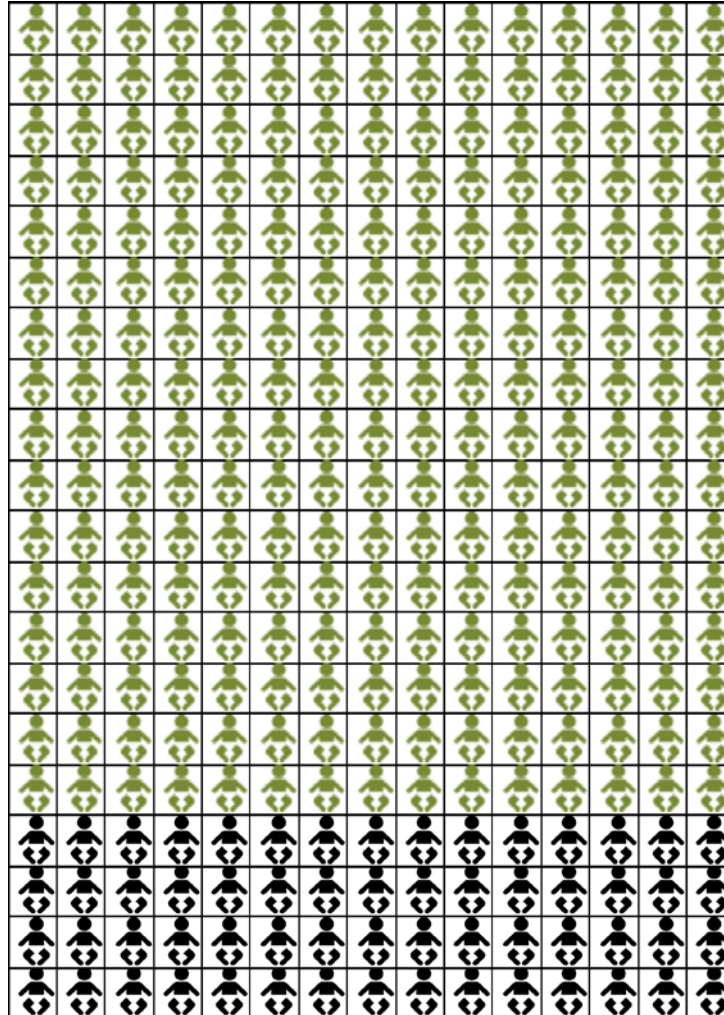
- Pneumonia
- Sepsis
- Meningitis
- Pyelonephritis
- Osteomyelitis, cellulitis

Requiring hospital admission

Stepwise exclusion



Stepwise exclusion

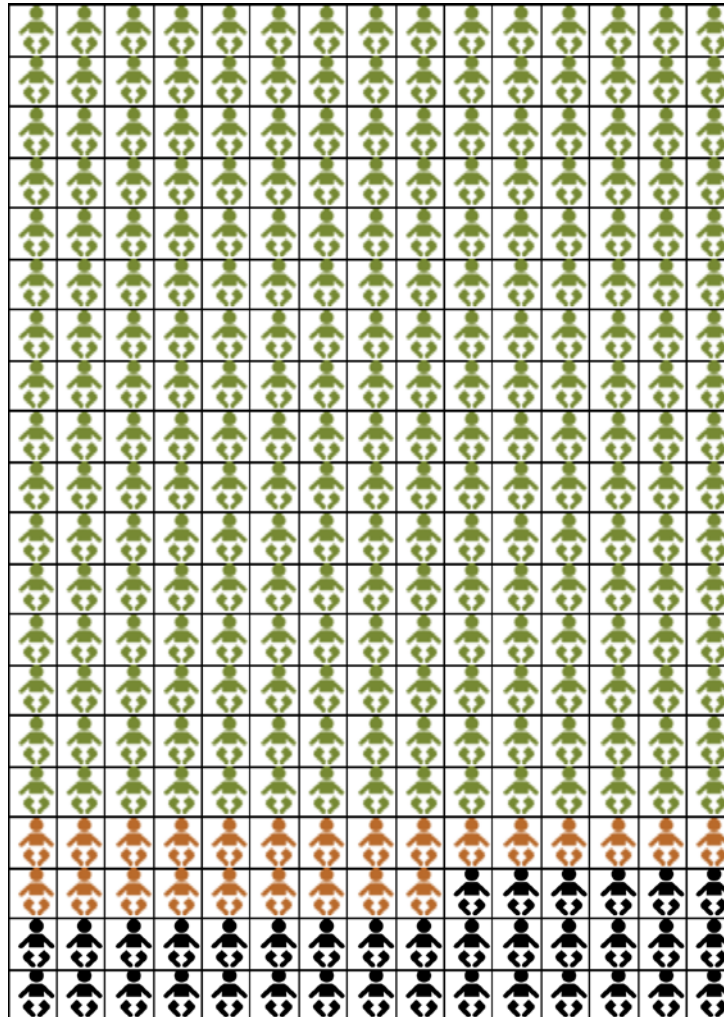


STEP 1

NO

- Gut feeling
- Dyspnoea
- Temperature $\geq 40^{\circ}\text{C}$

Stepwise exclusion

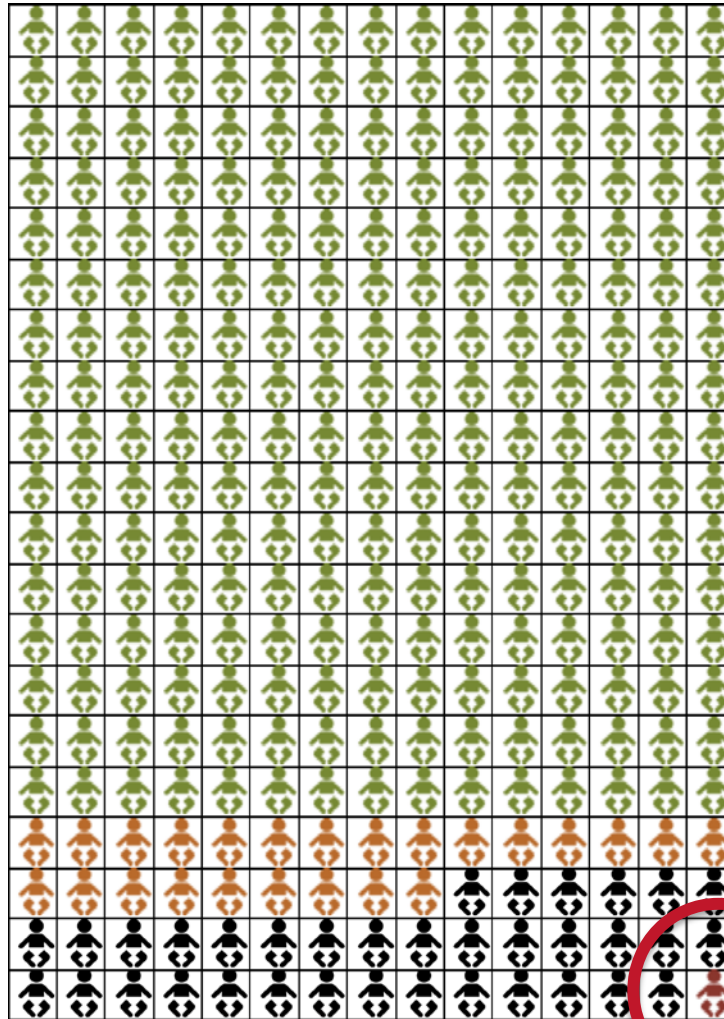


STEP 2

NO

- CRP >5 mg/L

Stepwise exclusion



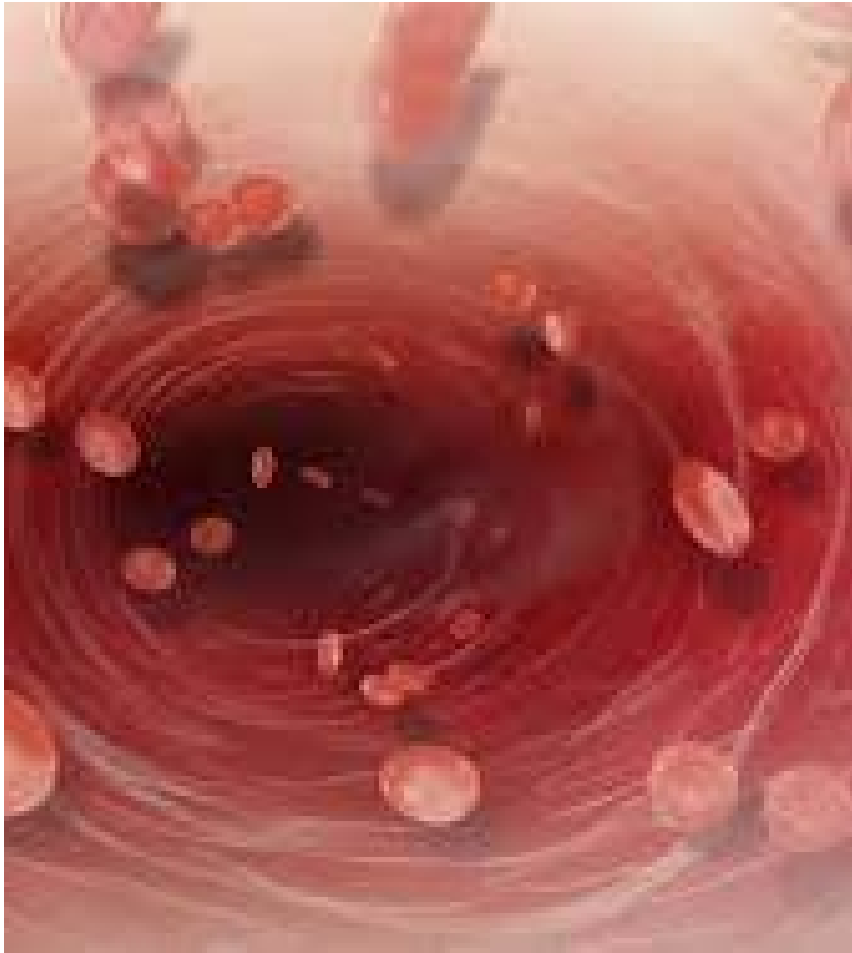
STEP 3
Additional testing or
referral

CRP for antibiotic prescribing

- Adults
- Lower respiratory tract infection
 - CRP > 100 mg/L
 - CRP 20-100 mg/L
 - CRP < 20 mg/L
- With instructions 30% decrease AB
- Children
- Lower respiratory tract infection
 - Instructions?
 - No effect
- Acutely ill children
 - Instructions?
 - No effect?

Serious infection - antibiotics

- Serious infections
 - Pneumonia: $\frac{3}{4}$ viral
 - Sepsis + meningitis
 - Pyelonephritis: urinalysis
- Exclude at 5mg/L
- Other causes of hospital admission
 - Wheezing
 - D&V
- Antibiotics
 - Otitis media
 - Tonsillitis
 - Pneumonia
 - Urinary tract infection
- 2/3 have CRP<20
- CRP levels infections which require ambulatory treatment with antibiotics?



- Time for a new biomarker?